

## Single Row PCB Connectors, French Railways approved

- 12 HC contacts Ø 0.76 mm
- 1 row PCB connector
- 2.54 mm pitch
- 3 mm Width
- 5000 mating-unmating cycles

### Technical Characteristics

|                      |                          |   |  |
|----------------------|--------------------------|---|--|
| <b>MATERIAL</b>      |                          | <b>MOUNTING</b> By screw. Bracket mounting option available only for receptacle |  |
| Insulator            | Thermoset                | <b>GUIDING PINS</b>   | 2 overmoulded keying systems in the plug |
| Pin & socket body    | Brass                    | <b>DIELECTRIC WITHSTANDING VOLTAGE</b>  | 1300 VRMS                                |
| Socket wires         | Copper alloy             | <b>CURRENT RATING</b>   | 4 A Max (25 °C)                          |
| Guides               | Brass                    | <b>INSULATION RESISTANCE</b>  | > 10 <sup>6</sup> MΩ (500 Vcc)           |
| <b>PLATING</b>       |                          | <b>CONTACT RESISTANCE</b>   | < 5 mΩ                                   |
| Pin and socket wires | Au/Ni                    | <b>TEMPERATURE RANGE</b>  | -55 °C, +125 °C                          |
| Guides               | Ni                       |   |  |
| <b>PITCH</b>         | 2.54 mm                  |   |  |
| <b>PIN</b>           | Ø 0.76 mm, non-removable |   |  |

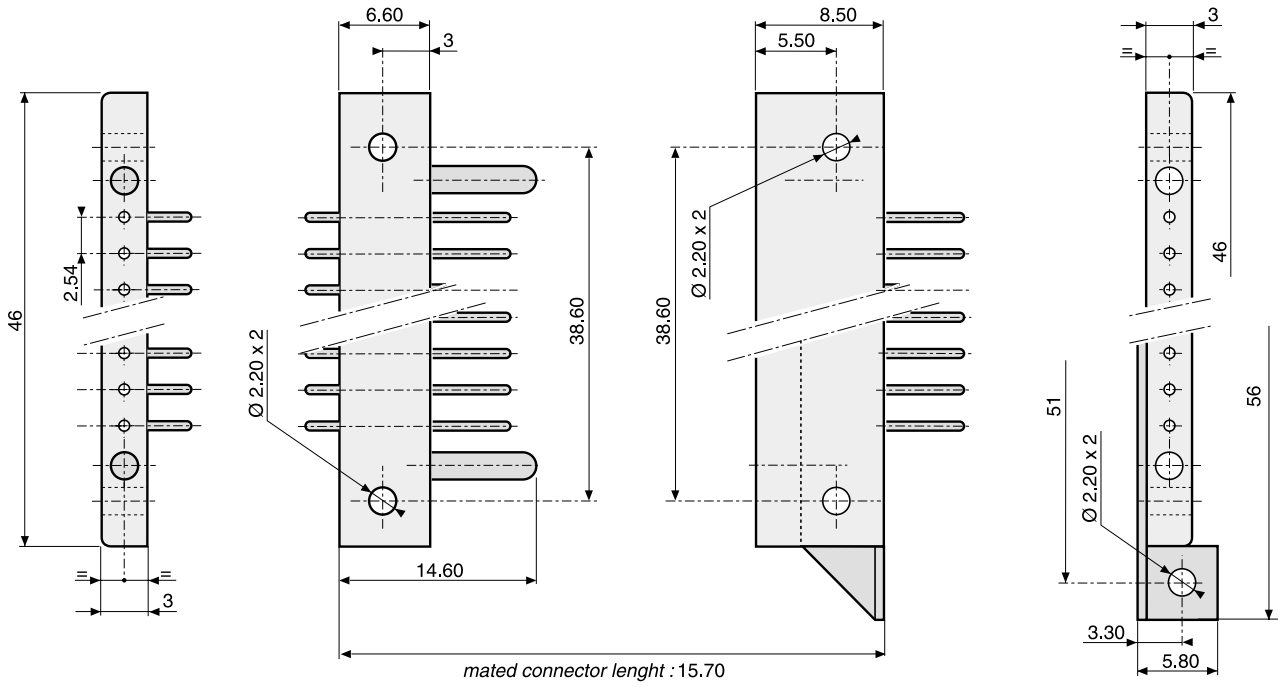
**Ordering information**

|  |                                 |     |   |   |     |     |                             |     |
|--|---------------------------------|-----|---|---|-----|-----|-----------------------------|-----|
| SERIES   |                                 | K   | G                                       | A | 012 | --  | --                          | --- |
| MODEL  |                                 |     |   |   |     |     |                             |     |
| 1 row  |                                 |     |   |   |     |     |                             |     |
| NUMBER OF CONTACTS   |                                 |     |   |   |     |     |                             |     |
| 012  |                                 |     |   |   |     |     |                             |     |
| PART - POLARITY - PLATING  |                                 |     |   |   |     |     |                             |     |
| 13   | Male plug                       | 22  | Female receptacle                       |   |     |     |                             |     |
| 17   | Male plug, tinned terminations* | 26  | Female receptacle, tinned terminations* |   |     |     |                             |     |
| TERMINATIONS   |                                 |     |   |   |     |     |                             |     |
| 10   | Bent 90°                        | 40  | Solder cup                              |   |     |     |                             |     |
| 30   | Straight                        |     |   |   |     |     |                             |     |
| MOUNTING   |                                 |     |   |   |     |     |                             |     |
| 117  | Transverse mounting (plug)      | 117 | Transverse mounting (receptacle)        |   |     | 120 | Axial mounting (receptacle) |     |
| *Tin plating is only available for bent or straight terminations (10 and 30) |                                 |     |   |   |     |     |                             |     |

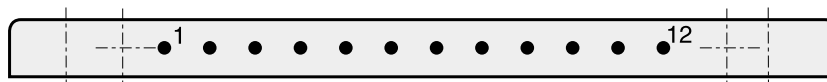
**Connector dimensions**

**Plug**

**Receptacle**



**Contact layout**

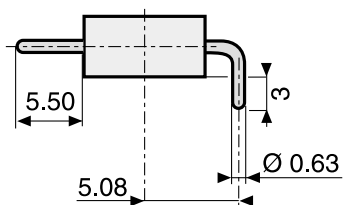


Wiring side view

**Terminations**

**Plug**

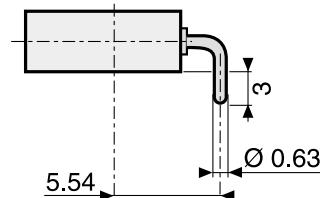
**90° termination**



Ref: 10

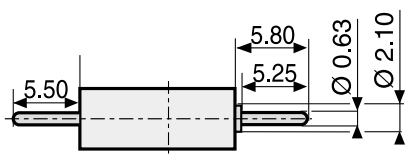
**Receptacle**

**90° termination**



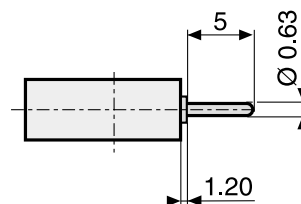
Ref: 10

**Straight**



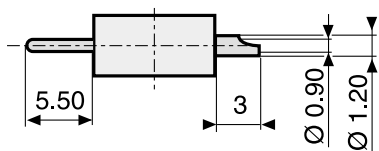
Ref: 30

**Straight**



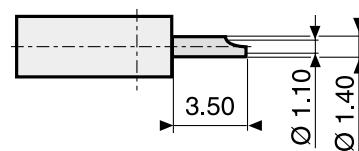
Ref: 30

**Solder cup**



Ref: 40

**Solder cup**

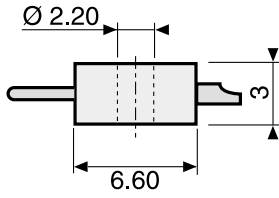


Ref: 40

**Mounting**

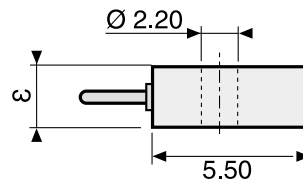
**Plug**

**Standard transverse**



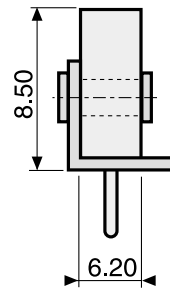
**Receptacle**

**Transverse**



Ref: 117

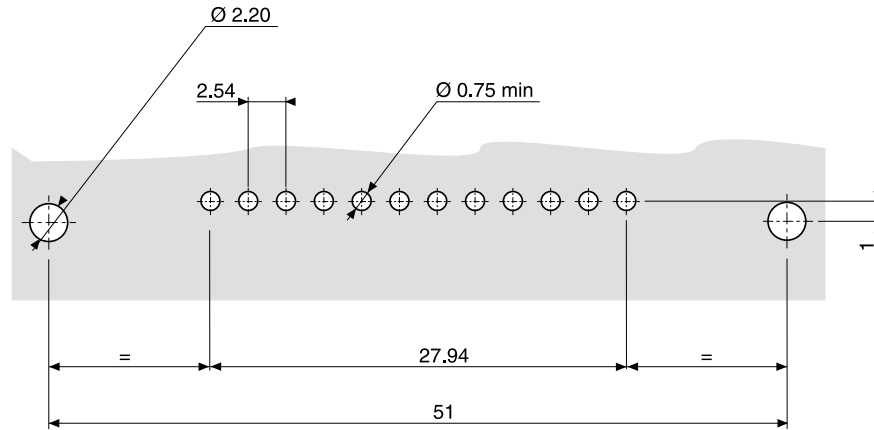
**Vertical**



Ref: 120

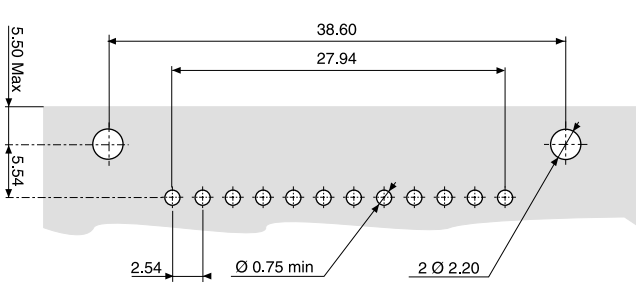
### Board and panel preparation details

#### Mother board

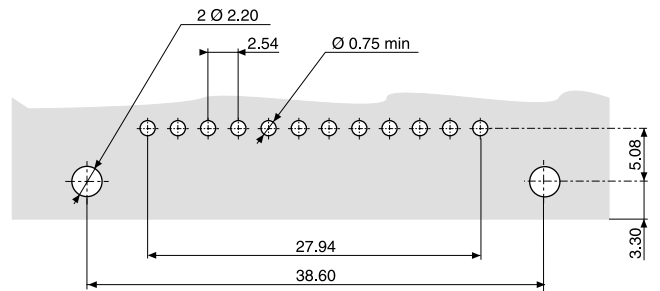


For vertical mounting receptacle

#### Daughter board

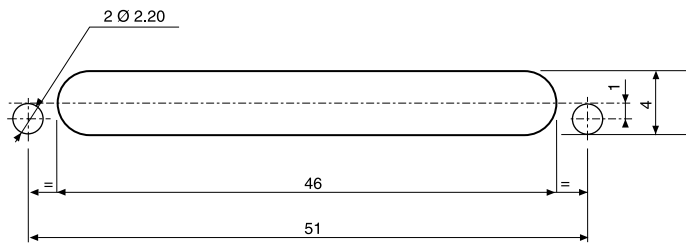


Bent termination receptacle



Bent termination plug

#### Panel



Vertical mounting receptacle

**Notes**

PCB and panel connector wiring side view

Dimensions are in mm